



Cleavelands Drive, Cheltenham, GL50 4QD

Guide Price £975,000

🛏️ 4 🚿 3 🚗 3



- PART EXCHANGE AVAILABLE*

- Bright sitting room

- Four bedrooms, two with en-suites

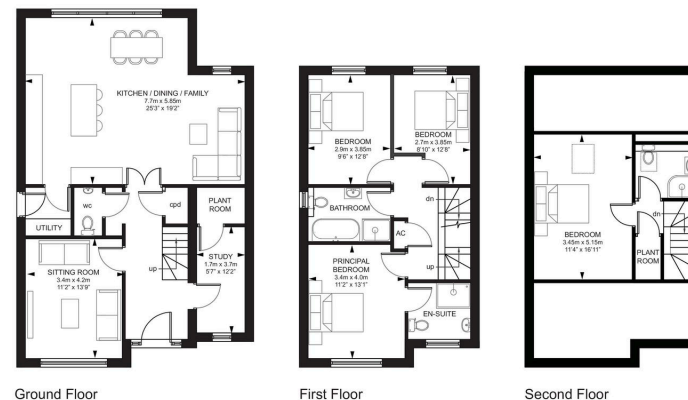
- Open-plan Kitchen/Dining/Family Room

- PART EXCHANGE AVAILABLE*

- Freehold tenure

- Prime town centre location



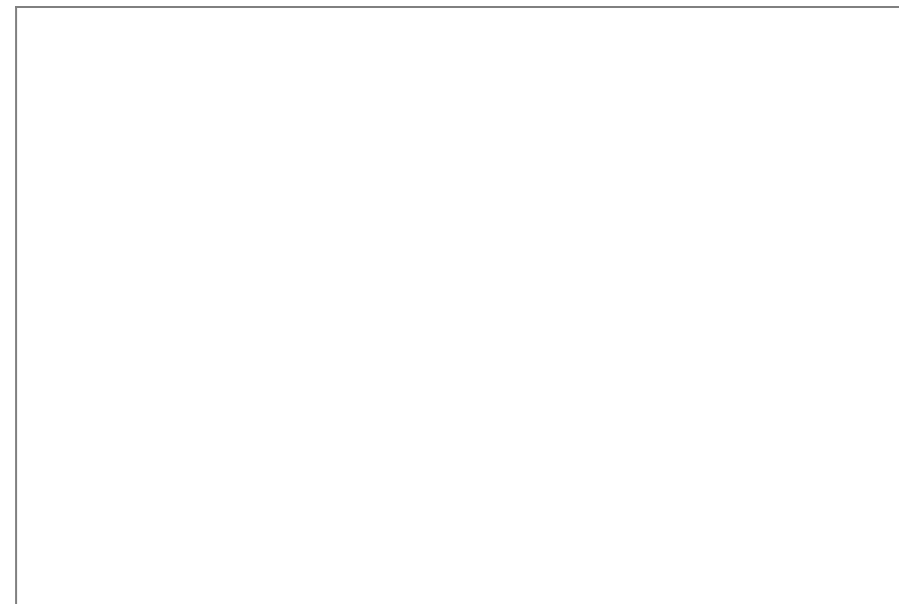


3 Broadmayne Mews



We are delighted to present 3 Broadmayne Mews, a beautifully designed four-bedroom home situated in a peaceful, private community. This home is finished to exceptional standards and includes modern energy-efficient features such as solar panels and a charging point for electric vehicles. Located in the prestigious Pittville area of Cheltenham, this property is developed by the well-regarded Le Grand Developments, known for their custom high-quality residences. Combining modern architecture with classic elegance, this home provides an unmatched living experience in a desirable location.

Additionally, the property is available for part exchange, subject to certain conditions.



Elliot Oliver Sales

101 Promenade, Cheltenham GL50 1NW

01242 321091

www.eosales.co.uk

