





# Regency Court, Brookbank Close, Cheltenham, GL50

£185,000

🛏️ 2 🪑 1 🚗 1



- Two bedrooms
- Top floor apartment
- Open plan living/dining/kitchen
- Ample storage
- Balcony
- Modern throughout
- Allocated parking
- Town Centre location
- No onward chain
- Council Tax Band: B



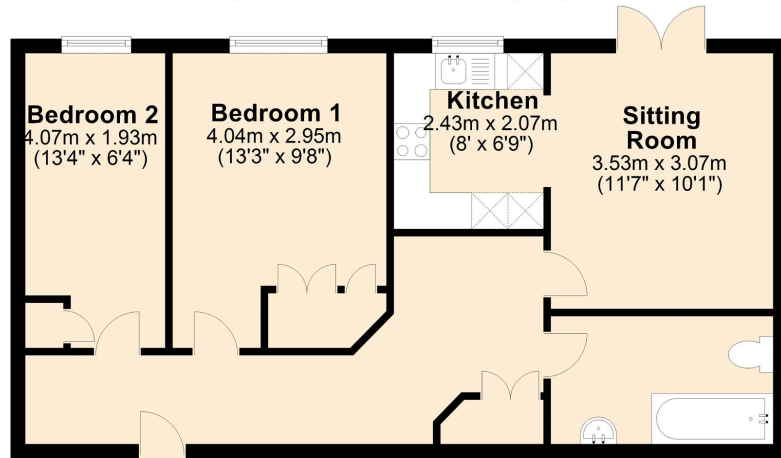


This charming two bedroom property has no onward chain and has been maintained to a high standard by its current owner. With allocated parking and being close proximity to the Town Centre, this property would be an excellent opportunity for a first time buyer looking to get themselves onto the property ladder.



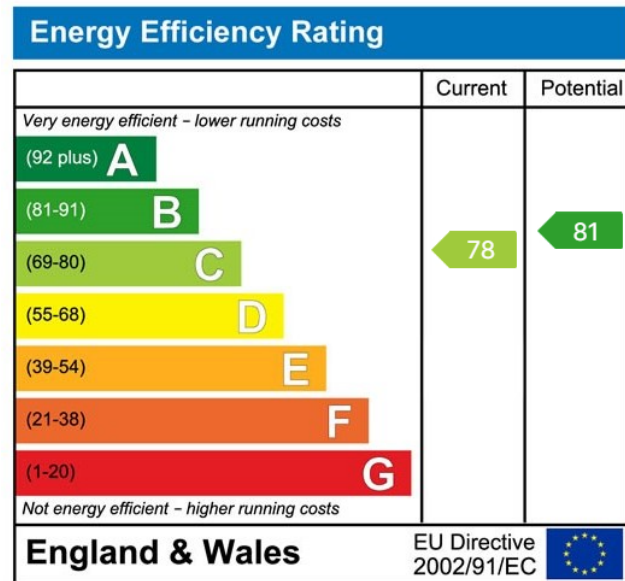
### Third Floor

Approx. 55.8 sq. metres (600.7 sq. feet)



Total area: approx. 55.8 sq. metres (600.7 sq. feet)

This plan is not to scale. For guidance purposes only.  
Plan produced using PlanUp.



Elliot Oliver Sales  
101 Promenade, Cheltenham GL50 1NW  
01242 321091  
www.elliottoliver.co.uk

