



Desert Orchid Road, Prestbury, Cheltenham, GL52

£425,000

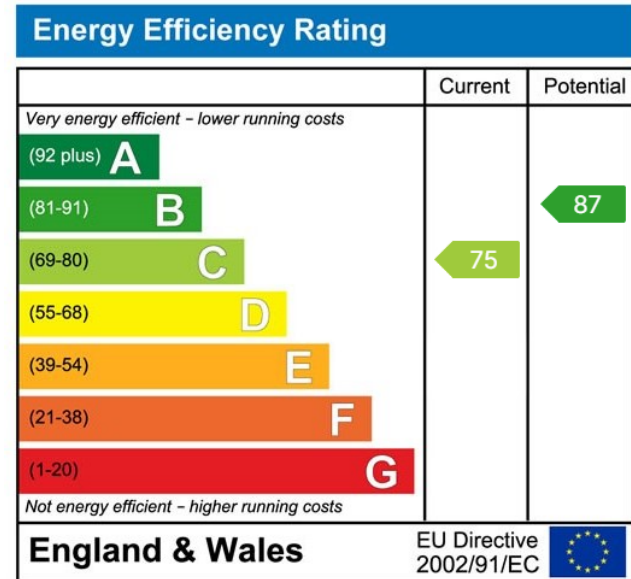
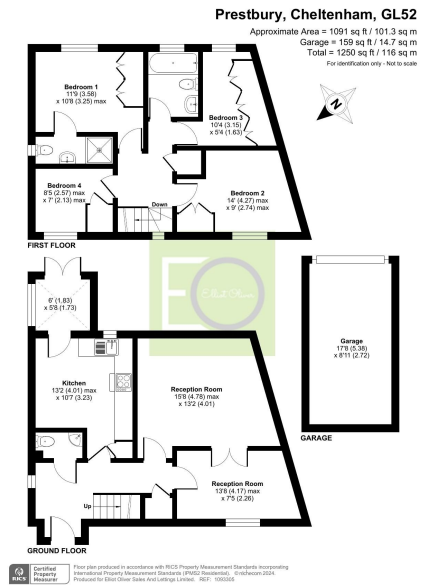
🛏️ 4 🚿 2 🚗 2



- Four bedrooms
- Semi-Detached
- Wonderfully presented
- Close to Cleve Hill
- Garage
- En-Suite to Main Bedroom
- Stylish Bathroom
- Modern kitchen
- Gas central heating



This is a very well presented four bedroom semi-detached house which is set at the foot of Cleeve Hill in Prestbury.



Elliot Oliver Sales
 101 Promenade, Cheltenham GL50 1NW
 01242 321091
 www.elliottoliver.co.uk

