



Lyndley Chase, Bishops Cleeve, Cheltenham, GL52

£420,000

🛏️ 3 🪑 2 🚿 2



A splendid three bedroom detached house which has been extended at the rear to offer a stunning kitchen/diner. This house was built by Redrow homes and is in the lovely village of Bishops Cleeve.

The downstairs consists on an entrance hall, lounge at the front, the rear now offers a simply wonderful kitchen/dining/living room with a stylish new kitchen and bi-folding doors to the rear garden. The superb kitchen itself offers an island, many pull out draws and cupboards and a re-fitted fridge/freezer and oven.

With three bedrooms upstairs, this property provides ample space for everyone in the family. The main bedroom is a spacious and bright, offering fitted wardrobes and an en-suite shower room. There is another double bedroom, plus an additional single bedroom that is currently being used as a nurse.

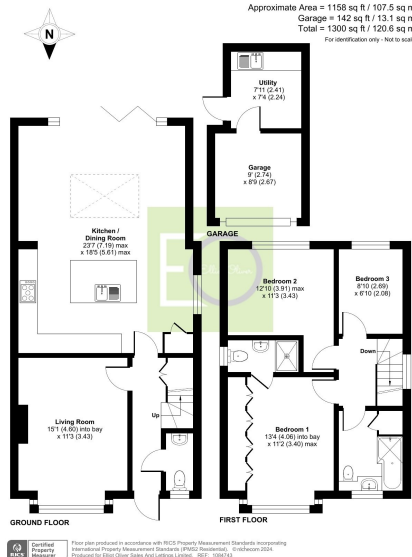
To the exterior there is a driveway with detached garage, a handy utility area and a large mature garden complete with patio area.

The property is conveniently located to local schooling and supermarkets, with Cheltenham Town Centre approximately three miles away and excellent transport links nearby.

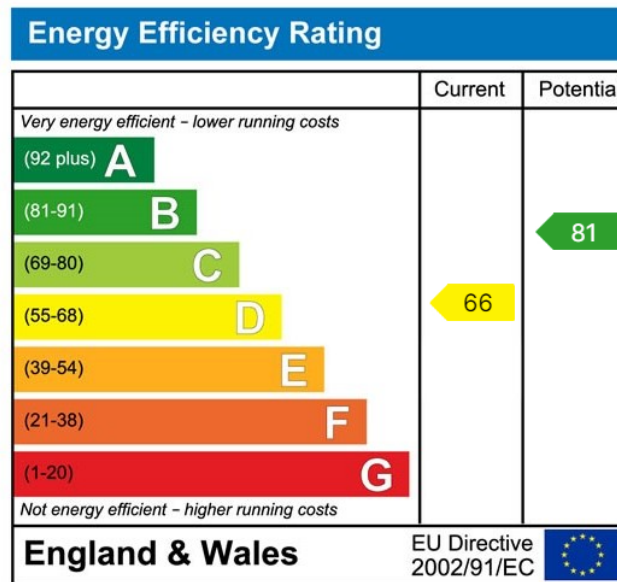


Bishops Cleeve, Cheltenham, GL52

Approximate Area = 1158 sq ft / 107.5 sq m
 Garage = 142 sq ft / 13.1 sq m
 Total = 1300 sq ft / 120.6 sq m
 For identification only - Not to scale



- Three bedrooms
- Two reception rooms
- En-suite to main bedroom.
- Single detached garage
- Close transport links to Cheltenham
- Detached property
- Fitted wardrobes in main bedroom
- Enclosed rear garden
- Bishops Cleeve location



Elliot Oliver Sales
 101 Promenade, Cheltenham GL50 1NW
 01242 321091
 www.elliottoliver.co.uk

