



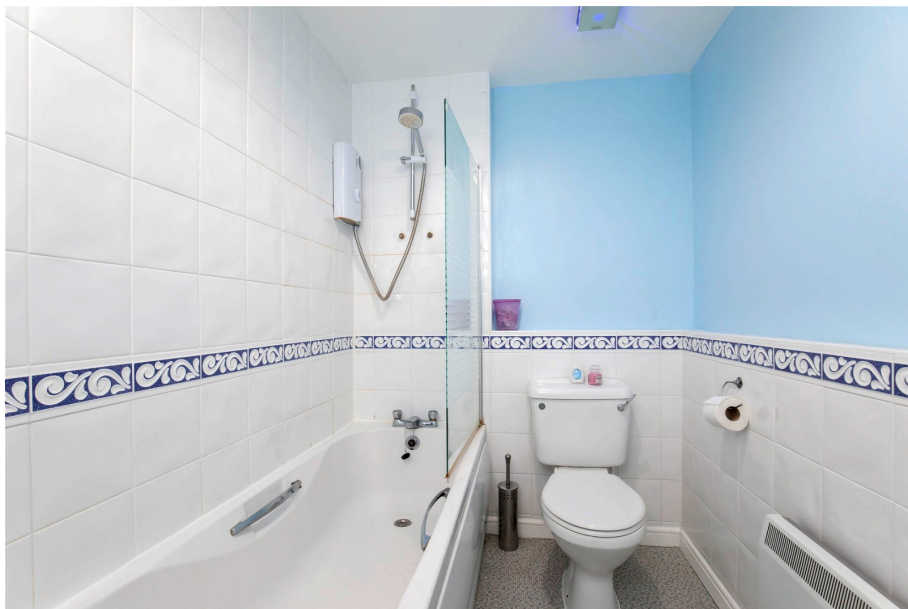
Sheldons Court Winchcombe Street, Cheltenham, GL52

£169,950

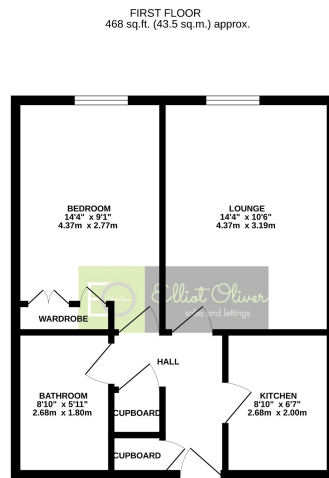
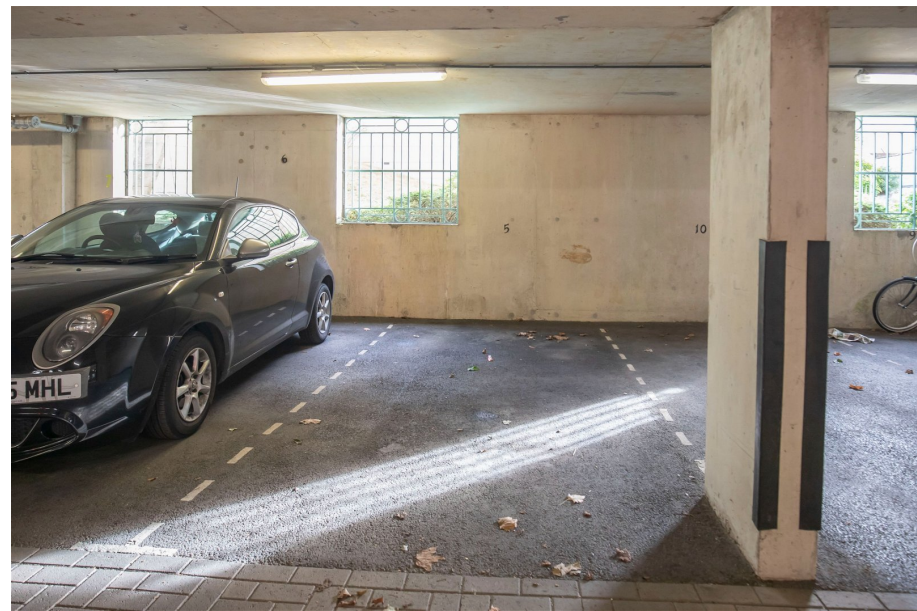
🛏️ 1 🚿 1 🚗 1



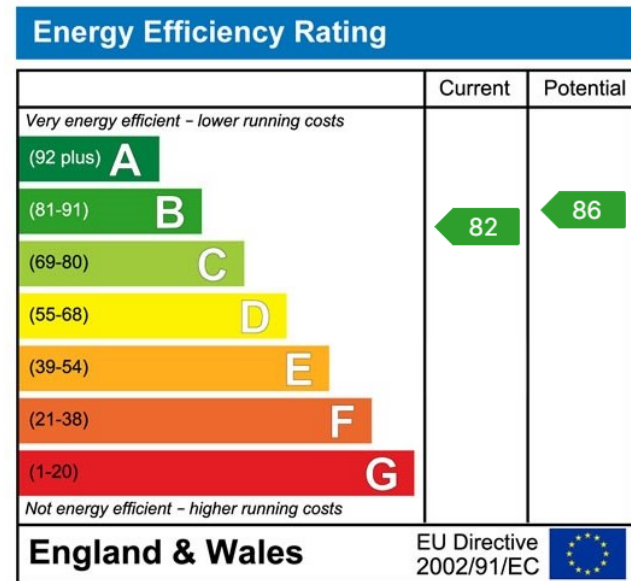
- One Bedroom
- Large Sitting/Dining Room
- Bathroom
- Easy access to Cheltenham Town Centre
- First Floor Apartment
- Fitted wardrobes
- Allocated Underground Parking
- Council Tax Band: B



A well established one bedroom apartment within easy access to Cheltenham town Centre. The first floor apartment consists of large open plan living/dining room, separate kitchen, bathroom and fitted wardrobes in the main bedroom. The added benefit to this property is the underground parking that it has to offer. This would be perfect for a first time buyer looking to get on the property market.



TOTAL FLOOR AREA: 468sq.ft. (43.5 sq.m.) approx.
While every effort has been made to ensure the accuracy of the figures contained here, measurements of actual areas should be taken from the ground level. The information contained here is for general guidance only. The information is not intended to be used as a basis for any legal proceedings. The information is not intended to be used as a basis for any legal proceedings. The information is not intended to be used as a basis for any legal proceedings.



Elliot Oliver Sales
 101 Promenade, Cheltenham GL50 1NW
 01242 321091
 www.elliottoliver.co.uk

