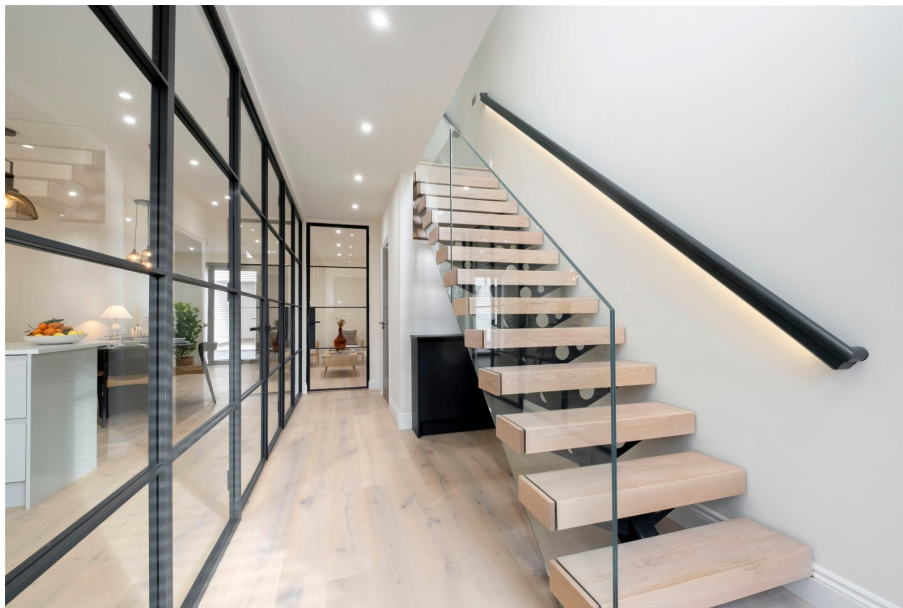




Carlton Street, Cheltenham, GL52 6AQ

£750,000

3 3 1

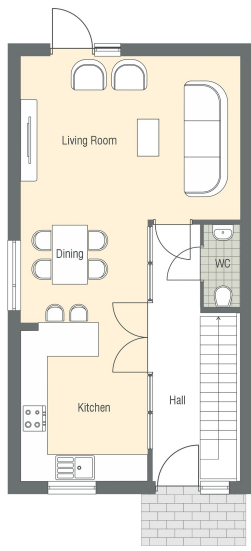


Carlton Gate by Edgefern Homes; A stunning collection of three bedroom, newly constructed terraced townhouses, spread over three floors and designed to an exceptional standard. The hallway features a metal cantilever staircase and Berkeley white oak flooring is laid across the ground floor with the beautiful kitchen/dining/living area, featuring Travertine worktops and integrated appliances, a true heart of the home. There is precise lighting positioned in the hallway, floor to ceiling windows and roof lights that are bursting with natural daylight. On the first floor, you will discover two generously proportioned bedrooms, each offering a comfortable and private retreat. They both benefit from en-suite facilities, designed with Porcelanosa tiles and Duravit Neo ranges. Head on upstairs to the second floor and prepare to be wowed at this principal bedroom, again with en-suite. A huge benefit to these houses is their energy efficiency with underfloor heating through all floors, solar panels, electric car charging point and Worcester Bosch boiler heating system.



Carlton Street is in the desirable location of Cheltenham, close to the vibrant shops, dining and entertainment that the Brewery Quarter has to offer. A short 10-minute walk from Cheltenham High Street with excellent access to Sandford Park, Sandford Lido, Cheltenham Hospital, and amenities near Montpellier. There is also superb access to schools to include Cheltenham College, Cheltenham Ladies' and Dean Close. You have easy access to the A40 and A435 with Cheltenham Spa station just under 2 miles away. The area regularly hosts festivals throughout the year with the Literature, Jazz, Science, and Music Festivals being held in Montpellier Gardens.





- Brand New
- Energy Efficient
- Open plan kitchen/dining/living area
- Feature cantilever staircase
- Terraced Townhouse
- Off road parking space
- En-suite to each bedroom
- Central location

