



Bouncers Lane, Cheltenham, GL52 5JW

£550,000

3 2 2

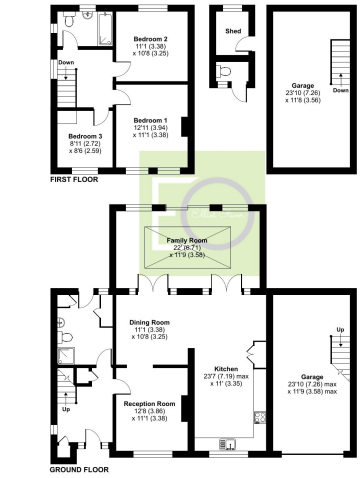


An attractive, spacious three bedroom family detached home is a central location of Prestbury with ample potential to improve (subject to planning). This is a two minute walk from St. Mary's Primary School.





Bouncers Lane, Cheltenham, GL5
 Approximate Area = 1513 sq ft / 140.6 sq m
 Garage(s) = 354 sq ft / 32.4 sq m
 Outbuilding = 53 sq ft / 4.9 sq m
 Total = 2130 sq ft / 197.9 sq m
 For information only - Not to scale



Certified Property Measure
 Floor plan produced in accordance with RICS Property Measurement Standards incorporating International Property Measurement Standards (IPMS) Requirements. © Elliot Oliver 2023
 Proprietor: Elliot Oliver Sales and Lettings Limited. REG: 100008



Elliot Oliver Sales
 101 Promenade, Cheltenham GL50 1NW
 01242 321091
 www.elliottoliver.co.uk

