



Jessop Avenue, Cheltenham, GL50 3SP

£270,000

🛏️ 2 🪑 2 🚗 1

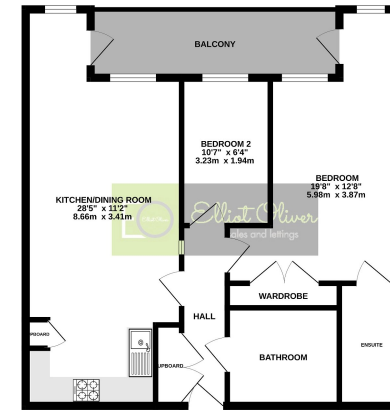


A delightful two bedroom apartment with a balcony attached. This is a great location close to Cheltenham town Centre and benefits a zone 12 residents' permit parking

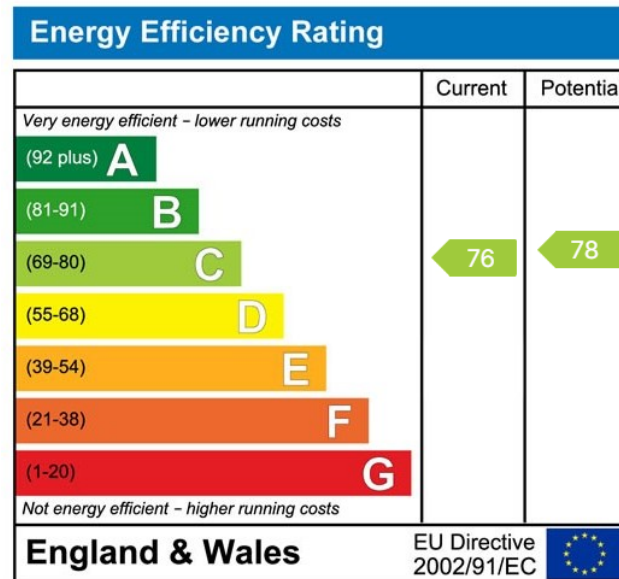




691 sq.ft. (64.2 sq.m.) approx.



TOTAL FLOOR AREA: 691 sq.ft. (64.2 sq.m.) approx.
 While every effort has been made to ensure the accuracy of the figures and floor plan, measurements are given as a guide only and do not constitute a contract. The actual area may vary slightly from the above. The seller, vendor and agent make no representation or warranty as to the accuracy of the above information.



Elliot Oliver Sales
 101 Promenade, Cheltenham GL50 1NW
 01242 321091
 www.elliottoliver.co.uk

